



Engineered  
for Safety

Designed for Style





---

Our best selling ZT Collection is designed with critical specifications for fit, form and function.

---



### ZT100 Group B/C

ZT100 offers eye protection in a contemporary, stylish design



**Sure-gripping Temple Tip**

- Plastic construction for consideration in non-conductive applications
- Three sideshield choices to meet the demands of any job:  
Clear, Metal Mesh, Black Opaque
- Three colors to suit most style preferences: Black, Blue/Gray, Gray/Red
- Three sizes to fit most workers: 53-15, 57-15, 62-15
- Adjustable length temples (125-150 mm) and soft, adjustable nose pads help provide a comfortable fit
- Swivel sure-gripping temple tips for snug and comfortable fit behind the ear

*Note – Glass lenses available for 53 and 57 eye size ONLY  
Glass lens cutout may be an issue with narrow PD in the 57 eye size*

*ZT100 details go to page 15.*

*Note – The ZT100 frame is designed for permanent attached sideshields only.*



**Lens Carriers** help provide side protection and are available in clear or smoke.



**Top Bar with Nose Pads & Temples**

*Note – that when tinted lenses are ordered, smoke lens carriers will automatically be supplied*



**Foam Brow Protector**

Brow Protector features soft foam pad for increased comfort and is easily removed and replaced. Replacements are available in packages of 3.



**Reflective Lanyard**



**ZT200 Group D**

Our second launch in the ZT Collection, ZT200, is a contemporary, stylish design

- Plastic construction for consideration in non-conductive applications
- Computer designed to help provide a comfortable fit for a wide range of head shapes and facial features
- Removable Lens Carriers with Integrated Side Protectors let the employer choose the proper lens for the job their workers are doing. Outdoors or indoors - one pair of safety eyewear fits most needs
- High Visibility Reflective Temples for greater safety at dusk and night
- Replaceable foam brow protector to help shield the eyes from particulates, perspiration and wind
- Breakaway lanyard with Hi Visibility Reflective stripe to keep ZT200 secure when needed
- Soft, adjustable nose pads help provide a comfortable fit
- Clear or gray tinted side protection to meet each specific application
- Comes in Clear or Smoke Lens Carrier





**DT-1** titanium

Size 54 16•140 | 56 16•145

Color Demi Grey | Demi Amber

Temple Spring Hinge Sideshield DT-1 Brow-Guard

Size 54 56

A 55.3 57.1

B 42.9 45.0

ED 57.1 59.2



**DT-2** titanium

Size 50 20•140 | 52 20•145

Color Antique Demi | Brown Marble

Temple Spring Hinge Sideshield DT-2 Brow-Guard

Size 50 52

A 50.4 52.7

B 37.9 40.0

ED 50.8 53.1



**DT-3** titanium

Size 50 18•140 | 52 18•145

Color Brown Satin | Navy

Temple Spring Hinge Sideshield DT-3 Brow-Guard

Size 50 52

A 50.3 52.4

B 30.6 32.7

ED 48.9 50.9



**DT-4** titanium

Size 48 20•135 | 50 20•140

Color Jade | Taupe

Temple Spring Hinge Sideshield DT-4 Brow-Guard

Size 48 50

A 47.9 50.0

B 32.9 34.8

ED 48.7 50.9



**Urban T-5** titanium

Size 49 19•135 | 51 19•140

Color Shiny Dark Gunmetal | Shiny Light Brown

Temple Spring Hinge Sideshield Urban 4/5 Brow-Guard

Size 49 51

A 49.1 51.5

B 31.9 33.4

ED 47.6 50.0



**DISCONTINUED**

**Urban T-4** titanium

Size 48 19•135 | 50 19•140

Color Matte Chrome | Matte Brown

Temple Spring Hinge Sideshield Urban 4/5 Brow-Guard

Size 48 50

A 48.0 50.2

B 32.3 33.5

ED 46.3 48.4



**DISCONTINUED**

**DTX 100** titanium  
 Size 52 15•140 | 54 15•145  
 Color Gunmetal | Sandstone  
 Temple Spring Hinge Sideshield DTX 100 Brow-Guard

Size 52 54  
 A 52.5 54.0  
 B 34.9 36.9  
 ED 54.0 55.8



**DISCONTINUED**

**DTX 200** titanium  
 Size 51 15•140 | 53 15•145  
 Color Brown | Olive  
 Temple Spring Hinge Sideshield DTX 200 Brow-Guard

Size 51 53  
 A 50.6 52.7  
 B 31.3 32.7  
 ED 52.5 54.2



**DISCONTINUED**

**TL-1**  
 Size 55 18•140  
 Color Navy | Olive  
 Temple Spring Hinge Sideshield TL-1/TL-2 Brow-Guard

Size 55  
 A 54.9  
 B 29.5  
 ED 57.0



**DISCONTINUED**

**TL-2**  
 Size 54 18•140 | 56 18•140  
 Color Brown | Pewter  
 Temple Spring Hinge Sideshield TL-1/TL-2 Brow-Guard

Size 54 56  
 A 54.9 56.0  
 B 29.5 33.6  
 ED 57.0 58.0





The OCC Mean Street frame provides close fitting streamlined style with removable gaskets for versatility.

**Mean Street Features:**

- Integrated side protection (no additional side shields required)
- Removable 8 base gaskets allow wearer to change lenses for indoor or outdoor activities
- Soft rubber nose pads for added comfort



*Note – as with all 8 base frames, some Rx limitations may occur depending on pupillary distance (PD) and multifocal fitting height.*



**Mean Street 8 Base**

Size 8 Base 61 18•125  
 Color Metallic Gray | Metallic Black  
 Temple Standard Sideshield Integrated

Size 61  
 A 60.8  
 B 35.5  
 ED 56.5

*See page 13 for Mean Street 6 Base.*

The V1000 frame offers great wrap-around styling and close-fitting comfort, for both indoor and outdoor tasks.

**V1000 Features:**

- Computer designed to help provide a comfortable fit
- Integrated side protection (no additional side shields required)
- High Visibility Reflective Temples for greater safety and added visibility at dusk and night
- 8 base lenses inserted directly into frame

*Note – as with all 8 base frames, some Rx limitations may occur depending on PD and multifocal fitting height*




**V1000 8 Base**


Size 61 16•130  
 Color Jet | Snow | Wine Fade  
 Temple Standard Sideshield Integrated

Size 61  
 A 60.4  
 B 34.2  
 ED 59.6

*See page 14 for V1000 6 Base.*




<b>Duster</b> stainless steel	Size 53
Size 53 17•130	A 53.6
Color Copper   Crimson   Pale Gold	B 32.8
Temple Spring Hinge Sideshield DST Brow-Guard	ED 50.7



**DISCONTINUED**

<b>Lightning</b> stainless steel	Size 56
Size 56 18•135	A 56.1
Color Chrome   Crimson	B 35.2
Temple Spring Hinge Sideshield LTG Brow-Guard	ED 57.0



<b>The Hunter</b> stainless steel	Size 55 57
Size 55 18•135   57 18•140	A 55.4 57.3
Color Gunmetal	B 42.4 44.5
Temple Spring Hinge Sideshield HTR Brow-Guard	ED 61.2 63.0



<b>Rebel</b> stainless steel	Size 56 58
Size 56 17•135   58 17•140	A 56.3 58.3
Color Chrome   Blue Horizon   Shiny Brown	B 34.9 36.8
Temple Spring Hinge Sideshield REB Brow-Guard SteelShield	ED 58.5 60.6



<b>TRX</b> stainless steel	Size 57 59
Size 57 17•135   59 17•140	A 56.9 59.3
Color Blue Horizon   Gunmetal   Shiny Brown	B 33.3 35.6
Temple Spring Hinge Sideshield TRX Brow-Guard SteelShield	ED 59.8 62.4

OCC TRX is a very popular frame that offers excellent coverage and a stylish design.




**NEW**

<b>Hog</b> stainless steel	Size 55
Size 55 17•125	A 55.2
Color Black   Brown	B 32.4
Temple Spring Hinge Sideshield HOG Brow-Guard	ED 54.9

Hog is our newest OCC frame that is featured in the very popular black color. Stylish eyewire shape provides a streamlined look for both men and women.





Urban 6 features the latest fashion wide temples in a sporty frame that looks great with clear or sun lenses.

**Urban 6**

Size 57 16•140

Color Black | Bronze

Temple Spring Hinge Sideshield URB 6 Brow-Guard

Size 57

A 56.9

B 32.9

ED 60.0



**Urban 3**

Size 47 21•135 | 49 21•140

Color Graphite | Copper

Temple Standard Sideshield URB 3 Brow-Guard

Size 47 49

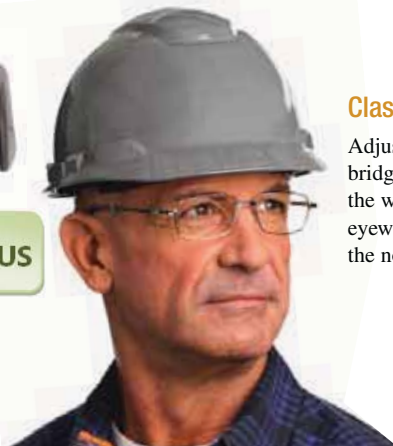
A 46.8 48.6

B 32.1 34.3

ED 46.1 48.2



NOW GROUP D PLUS



**Classic 1 Features:**

Adjustable comfort-bridge helps distribute the weight of the eyewear more evenly on the nose.

**Classic 1**

stainless steel

Size 50 15•130 | 52 15•135

Color Brown | Silver

Temple Spring Hinge Sideshield CLS1 Brow-Guard

Size 50 52

A 50.7 52.7

B 33.2 35.3

ED 54.5 56.6



NOW GROUP D PLUS

NEW

Classic 1 and Classic 2 offer timeless traditional designs that are flattering to many face shapes.



**Classic 2 Features:**

Adjustable comfort-bridge helps distribute the weight of the eyewear more evenly on the nose.

**Classic 2**

stainless steel

Size 50 15•130 | 53 15•135

Color Brown/Tortoise | Gray/Black

Temple Spring Hinge Sideshield CLS2 Brow-Guard

Size 50 53

A 51.3 53.8

B 36.8 38.7

ED 53.9 55.9



SteelShield offers a stylish new look for two of our most popular frames

**NEW SteelShield Features:**

- Provides ventilation with style
- SteelShield colors match the color of the Rebel and TRX frames
- Slip on mesh SteelShields can be ordered as removable or permanently attached

Blue Horizon



Shiny Brown



Gunmetal



Chrome



Rebel



TRX

**SteelShield Data:**

**Frame Styles**

TRX	Rebel
<i>Small &amp; Large Sizes</i>	<i>Small &amp; Large Sizes</i>

*Note – when ordering SteelShields specify frame size.*

**Frame and SteelShield Colors**

TRX	Rebel
<i>Blue Horizon</i>	<i>Blue Horizon</i>
<i>Shiny Brown</i>	<i>Shiny Brown</i>
<i>Gunmetal</i>	<i>Chrome</i>





**Steel 200** stainless steel  
 Size 53 16•135 | 55 16•140  
 Color Cobalt | Sand  
 Temple Spring Hinge Sideshield STL200 Brow-Guard

Size	53	55
A	53.2	55.1
B	31.7	33.8
ED	54.9	56.8



**Steel 300** stainless steel  
 Size 50 19•140 | 52 19•145  
 Color Shiny Gray | Shiny Brown  
 Temple Spring Hinge Sideshield STL300 Brow-Guard

Size	50	52
A	50.3	52.3
B	35.3	37.2
ED	52.4	55.4



**Steel 400** stainless steel  
 Size 49 19•140 | 51 19•145  
 Color Gray Matte/Brown Matte | Brown Matte/Matte Silver  
 Temple Spring Hinge Sideshield STL400 Brow-Guard

Size	49	51
A	49.4	51.3
B	34.4	36.5
ED	52.6	54.4



**Steel 500** stainless steel  
 Size 48 20•135 | 50 20•140  
 Color Rifle | Chestnut  
 Temple Spring Hinge Sideshield STL500 Brow-Guard

Size	48	50
A	47.5	49.6
B	34.8	36.5
ED	49.8	51.8



**Steel 600** stainless steel  
 Size 48 19•135 | 50 19•140  
 Color Azure | Bordeaux  
 Temple Spring Hinge Sideshield STL600 Brow-Guard

Size	48	50
A	48.4	50.6
B	31.5	33.0
ED	48.1	50.4



**Steel 700** stainless steel  
 Size 48 20•135 | 50 20•140  
 Color Black/Silver | Brown/Tan  
 Temple Spring Hinge Sideshield STL700 Brow-Guard

Size	48	50
A	47.6	49.6
B	33.6	35.2
ED	49.1	51.2

The Steel 800 offers the classic aviator style with contemporary colors and treatments.

**Steel 800 Features:**

- Stainless Steel construction
- Lighter weight than Nickel Silver
- Stylish tortoise brow piece for secure and comfortable fit



NOW GROUP D PLUS



<b>Steel 800</b> stainless steel	<b>Size</b> 54 56
<b>Size</b> 54 16•130   56 16•135	<b>A</b> 54.2 56.7
<b>Color</b> Gold   Gunmetal	<b>B</b> 41.5 42.8
<b>Temple</b> Spring Hinge <b>Sideshield</b> STL800 Brow-Guard	<b>ED</b> 60.8 63.2

**Maxim™ Air Seal Rx Features:**

- Comfortable rubber air bladder seal to help keep out dust and particulates
- Ventilation channel helps prevent fogging of the lens
- Plastic construction for consideration in non-conductive applications



**Maxim™ Air Seal Kit:**

Case, Strap, Temples & Cleaning Cloth

Includes Maxim Air Seal Rx, interchangeable temples and headband strap, an anti-fog solution and a sturdy eyeglass carrying case.

Maxim Air Seal Rx is ventilated, but for optimal performance we recommend ordering with 3M's anti-fog coating treatment.

<b>Maxim™ Air Seal Rx</b>	<b>Size</b> 53
<b>Size</b> 53 26	<b>A</b> 53.0
<b>Color</b> Black	<b>B</b> 38.6
<b>Sideshield</b> Intergrated	<b>ED</b> 60.0



<b>730</b>	
Size 48 18•140   50 18•145	Size 48 50
Color Canyon   Charcoal	A 47.6 49.7
Temple Spring Hinge Sideshield 730 Brow-Guard	B 37.8 40.1
	ED 48.8 50.6



<b>DP720</b>	
Size 51 19•140   53 19•145	Size 51 53
Color Matte Brown   Matte Grey	A 50.5 52.4
Temple Spring Hinge Sideshield DP720 Brow-Guard	B 31.3 33.2
	ED 52.6 54.7



<b>DP810</b>	
Size 49 19•140   51 19•145	Size 49 51
Color Brown   Olive	A 49.1 51.1
Temple Spring Hinge Sideshield DP810 Brow-Guard	B 32.6 34.4
	ED 49.1 52.4



<b>DP820</b>	
Size 52 19•140   54 19•145	Size 52 54
Color Brown   Gunmetal	A 51.8 54.0
Temple Spring Hinge Sideshield DP820 Brow-Guard	B 32.7 34.8
	ED 51.8 54.1



<b>DP830</b>	
Size 53 19•140   55 19•145	Size 53 55
Color Khaki   Navy	A 52.1 54.5
Temple Spring Hinge Sideshield DP830 Brow-Guard	B 31.6 33.7
	ED 53.5 55.9



<b>Outlaw</b>	
Size 54 26	Size 54
Color Midnight	A 55.1
Temple Integrated Sideshield Integrated	B 28.2
	ED 49.1



<b>Maxim™ Rx Insert</b>	
Primary Protector Clear Only	Rx Insert 45
Rx Insert 45 18	A 45.2
	B 39.7
	ED 50.9



<b>QX™ Rx Insert</b>	
Primary Protector Clear Only	Rx Insert 48
Rx Insert 48 18	A 48.4
	B 40.3
	ED 50.0





<b>650</b>	
Size 48 16•140   50 16•145	Size 48 50
Color Brown Marble   Gray Marble	A 47.1 49.5
Temple Spring Hinge Sideshield 650 Brow-Guard	B 29.8 31.5
	ED 47.3 50.1



<b>EC550</b>	
Size 54 18•140   56 18•145	Size 54 56
Color Gunmetal	A 55.1 57.8
Temple Spring Hinge Sideshield EC/EX550 Brow-Guard	B 44.2 47.0
	ED 58.8 64.3



<b>EX550</b>	
Size 54 18•140   56 18•145	Size 54 56
Color Gunmetal   Gold	A 55.1 57.8
Temple Spring Hinge Sideshield EC/EX550 Brow-Guard	B 44.3 47.0
	ED 58.8 64.3



<b>Alpha</b>	
Size 49 20•130   51 20•135	Size 49 51
Color Brown   Olive	A 49.2 51.0
Temple Standard Sideshield EZA Brow-Guard	B 32.5 35.0
	ED 50.4 52.4



<b>Beta</b>	
Size 56 18•140   58 18•145   60 18•145	Size 56 58 60
Color Gold   Gunmetal	A 55.9 58.0 60.0
Temple Standard Sideshield EZB Brow-Guard	B 41.3 43.1 45.1
	ED 58.7 61.2 63.2



<b>Gamma</b>	
Size 52 18•140   54 18•145	Size 52 54
Color Gold   Gunmetal	A 51.9 53.8
Temple Standard Sideshield EZG Brow-Guard	B 37.1 39.1
	ED 55.5 56.3



<b>Mean Street 6 base</b>	
Size 57 18•125	Size 57
Color Metallic Black   Metallic Gray	A 57.1
Temple Standard Sideshield Integrated	B 33.5
	ED 52.1



Gaskets

See page 6 for information on Mean Street 8 base.

Mean Street 6 base





**ZT200**

Size 54 20•126

Color Black/Lime Green | Gray/Yellow | Navy Blue/Gray

Temple Standard Sideshield Integrated

Size 54  
A 53.7  
B 34.1  
ED 53.5

See page 3 for more information on ZT200.



**DX670**

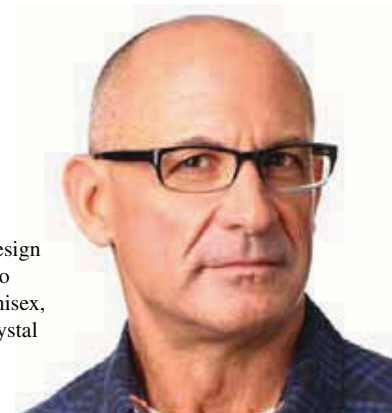
Size 51 19•135 | 53 19•140

Color Olive | Tortoise

Temple Spring Hinge Sideshield DX670 Brow-Guard

Size 51 53  
A 51.3 53.4  
B 31.3 33.0  
ED 53.2 55.7

DX670 features adjustable nose pads that allow for comfortable fit on a wide variety of face and nose shapes. An excellent option for non-Caucasian wearers with minimal nose bridge space.



**D490**

Size 54 16•140 | 56 16•145

Color Black Crystal | Brown Amber

Temple Standard Sideshield D490 Brow-Guard

Size 54 56  
A 54.3 56.4  
B 30.9 33.1  
ED 56.1 58.3

The D490 frame is a modern design that uses the straight browline to create an upbeat look. A true unisex, it is offered in popular black crystal and demi amber.



See page 6 for information on V1000 8 base.

**V1000 6 Base**

Size 52 19•130

Color Jet | Snow | Wine Fade

Temple Standard Sideshield Integrated

Size 52  
A 51.3  
B 30.4  
ED 51.2

V1000 6 base features streamlined 6 base gaskets when the 8 base version is not an option due to Rx limitations.



<b>C7000</b>		Size	52	54
Size 52 18•140   54 18•145		A	54.4	56.6
Color Silver		B	46.9	48.8
Temple Standard	Sideshield C7000 Brow-Guard	ED	58.9	61.1
Cable 165	Breeze-Catcher   Perforated			



<b>CX7000</b>		Size	52	54
Size 52 18•140   54 18•145		A	54.4	56.6
Color Silver		B	46.9	48.8
Temple Standard	Sideshield CX7000 Brow-Guard	ED	58.9	61.1
Cable 165	Breeze-Catcher   Perforated			



<b>C470</b>		Size	51
Size 51 16•135		A	51.4
Color Blue   Brown		B	34.6
Temple Spring Hinge	Sideshield C470 Brow-Guard	ED	52.4



<b>C8000</b>		Size	52
Size 52 18•140		A	56.3
Color Silver		B	46.5
Temple Standard	Sideshield C8000 Brow-Guard	ED	56.6

**ZT100 Features:**

- Plastic construction for consideration in non-conductive applications
- Three sideshield choices to meet the demands of most job tasks: Clear, Metal Mesh, Black Opaque
- Three colors to suit your style preferences: Black, Blue/Gray, Gray/Red
- Three sizes to fit most workers: 53-15, 57-15, 62-15

Please see page 2 for more information on ZT100.



<b>ZT100</b>		Size	53	57	62
Size 53 15   57 15   62 15		A	53.0	57.0	62.0
Color Black   Blue/Gray   Gray/Red		B	33.9	35.7	36.9
Temple Adjustable	Sideshield Clear   Metal Mesh   Opaque	ED	54.3	57.9	62.8
	Permanently Attached Only				



**F6000**

Size 48 13•135 | 50 13•140 | 53 15•140 | 55 15•145

Color Gray Fade

Temple Standard Cable 170mm  
 Sideshield F6000 Brow-Guard  
 Breeze-Catcher | Full Cup Perforated

Size	48	50	53	55
A	48.0	49.7	52.3	57.1
B	41.0	44.3	45.0	50.0
ED	55.0	59.0	53.9	64.0



**NEW SIZE**

**A2000**

Size 54 16•114 | 58 16•114

Color Blue | Pink | Smoke

Temple Standard Sideshield Integrated

Size	54	58
A	55.4	58.1
B	32.1	34.2
ED	53.8	57.5

**Eagle Features:**

- Adjustable temples help provide a comfortable and secure fit
- Brow protector helps keep dust and dirt away from eyes
- Air vent temples help provide ventilation and reduce fogging

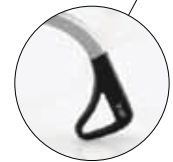
**Flip up**

Eagle Flip-up available with IR Shade 3.0, 5.0, Cobalt and ACE (replacement for didymium)



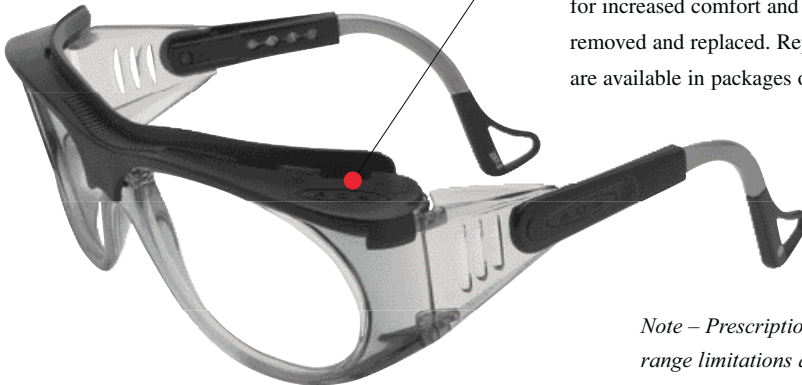
**Temple Tip**

Temple tip rotates to provide sure-grip fit



**Brow Protector**

Brow Protector features soft foam pad for increased comfort and is easily removed and replaced. Replacements are available in packages of 10.



**Eagle**

Size 53 13 | 56 11 | 59 13

Color Smoke

Temple Adjustable Sideshield Integrated

Size	53	56	59
A	56.1	57.9	61.9
B	41.0	42.2	45.4
ED	56.9	58.5	62.4

*Note – Prescription range limitations are -6.00 D to +4.00 D and cylinder up to and including -2.00 D (-3.00 D on smaller eye size).*







<b>F4000</b>		<b>Size</b> 53 55
<b>Size</b> 53 18•145   55 18•145		<b>A</b> 55.5 57.4
<b>Color</b> Gray		<b>B</b> 46.9 48.7
<b>Temple</b> Standard	<b>Sideshield</b> F4000 Brow-Guard	<b>ED</b> 59.4 60.5



<b>F5000</b>		<b>Size</b> 53
<b>Size</b> 53 16•140		<b>A</b> 52.3
<b>Color</b> Brown		<b>B</b> 45.0
<b>Temple</b> Standard	<b>Sideshield</b> F5000 Brow-Guard	<b>ED</b> 53.9



<b>F9800</b>		<b>Size</b> 46 48
<b>Size</b> 46 20•6   48 20•6		<b>A</b> 45.4 48.0
<b>Color</b> Smoke		<b>B</b> 38.6 41.0
<b>Temple</b> Standard	<b>Sideshield</b> F98/99 Brow-Guard	<b>ED</b> 49.3 51.7
<b>Cable</b> 170mm	<b>Breeze-Catcher</b>   <b>Full Cup Perforated</b>	



<b>F9900</b>		<b>Size</b> 50 52
<b>Size</b> 50 22•6   52 22•6		<b>A</b> 49.7 52.0
<b>Color</b> Smoke		<b>B</b> 42.4 45.0
<b>Temple</b> Standard	<b>Sideshield</b> F98/99 Brow-Guard	<b>ED</b> 53.6 55.7
<b>Cable</b> 170mm	<b>Breeze-Catcher</b>   <b>Full Cup Perforated</b>	

## Sideshields

### Brow-Guard



- Made from high impact polycarbonate
- Comprehensive side and brow protection
- Available in clear or gray
- Permanently attached or detachable

### Breeze-Catcher



- Wire mesh design offers maximum ventilation
- Oxidized, corrosion resistant wire mesh
- Reduces fogging, improves comfort
- Full-cup design
- Tighter weave 40 mesh
- Permanently attached

### Perforated Full Cup



- Made from propionate
- Perforated design helps reduce fogging
- Permanently attached

### Metal Mesh (ZT100 Only)



- Made from high impact Polycarbonate and Stainless Steel
- Oxidation and corrosion resistant
- Provides ventilation and helps reduce fogging
- Permanently attached

Note – not all sideshield options are available on every frame. See frame data for specific availability.



Steel 800



Urban 6



D490



Urban 6



ZT 200



DP830



ZT 100

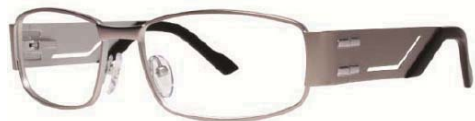
**NEW!**



**Attitude 3 Data: (GROUP G)**  
FRAME SIZE:  
52 □ 18 135    54 □ 18 140  
A: 52.2    A: 54.8  
B: 33.6    B: 34.6  
ED: 53.7    ED: 55.7  
FRAME COLORS: Burgundy/Silver, Moss/DK Gun  
SIDESHIELD: Brow-Guard



**Attitude 4 Data: (GROUP G)**  
FRAME SIZE:  
53 □ 18 135  
A: 53.1  
B: 32.8  
ED: 54.3  
FRAME COLORS: Black/Silver, Blue/Silver  
SIDESHIELD: Brow-Guard



**Urban 7 Data: (GROUP F)**  
FRAME SIZE:  
57 □ 16 135  
A: 56.8  
B: 34.3  
ED: 57.9  
FRAME COLORS: Gunmetal, Navy  
SIDESHIELD: Brow-Guard



**Urban 8 Data: (GROUP F)**  
FRAME SIZE:  
55 □ 18 140  
A: 55.1  
B: 32.1  
ED: 55.3  
FRAME COLORS: Matte Black, Brown  
SIDESHIELD: Brow-Guard



V1000



**3M Occupational Health & Environmental Safety Division  
Safety Prescription Eyewear**

2925 Gary Drive  
Plymouth, IN 46563  
United States  
800.982.2828  
[www.3M.com/SafetyRx](http://www.3M.com/SafetyRx)

Please recycle. Printed in U.S.A.  
© 3M 2012. All rights reserved.  
70-0716-2544-9 rev 3/12



**WARNING!**

These eye protection products help provide limited eye protection. **Misuse or failure to follow warnings and instructions may result in serious potential injury, including blindness or death.** For proper use, selection and applications against flying particles, optical radiation and/or splash, see supervisor or call 3M OH&ESD Technical Service in the USA at 800.243.4630. In Canada, call 1-800-267-4414.

© 2012 3M. All Rights Reserved. Manufactured by 3M Company under license from Orange County Choppers International LLC. Orange County Choppers, OCC, and OCC LOGO and related indicia are trademarks of Orange County Choppers Design Properties, LLC used under license. 3M and all other trademarks used herein or hereon are trademarks of 3M Company.